

Serving the Industry Since 1983

LOOKING FOR TROUBLE?



If so... YOU WILL FIND IT WITH...

THE ALL-TEST!

# EMCAT Software

## Motor Circuit Analysis Software for Predictive Maintenance, Troubleshooting and Condition Monitoring Of Electric Motors and Transformers

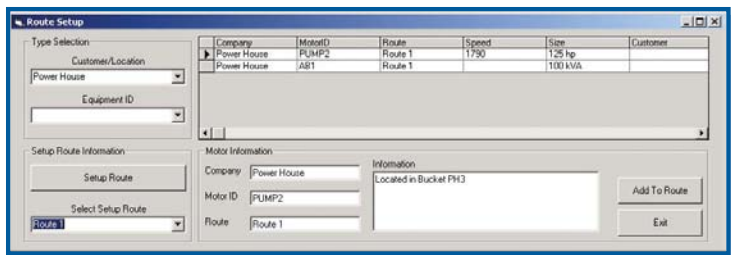
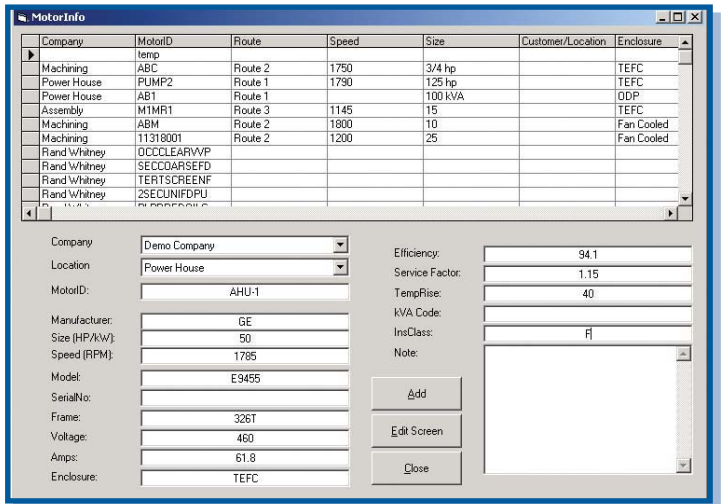
EMCAT software provides Total Motor System Maintenance and Management for your organization whether you are a service company or an in-house maintenance department. EMCAT integrates seamlessly with the ALL-TEST IV Pro 2000 Motor Circuit Analyzer and data collector to create a complete PdM tool incorporating route, work order management and extensive diagnostics.

Developed based on input from our largest industrial users and service organizations, EMCAT is designed to be the industry's most powerful tool for tracking, scheduling and maintaining records of AC/DC electric motors and transformers.



### Comprehensive Database

At the heart of EMCAT is a database where you collect and organize nameplate information from all of your motors and transformers. For a manufacturing site, records can be grouped by building and/or process. For a service organization, records can be grouped by customer name and location. Because it was designed to readily support both in house and contract service organizations, EMCAT has the fields and flexibility you need to clearly identify any motor or device or customer.



### Route Management and Maintenance Scheduling

For predictive maintenance and condition monitoring, EMCAT lets you create "routes" of devices for scheduled testing. Work orders can be printed, and motor data can be downloaded to the ALL-TEST IV Pro 2000.

## Diagnostics and Trending

Built-in diagnostic algorithms take the guesswork out of interpreting test results. Separate profiles are provided for AC motors, DC motors and Transformers. Evaluation of rotor test data is also built in; a unique Rotor Grading System (RGS) gives a diagnosis and "grades" the rotor. All measurements including rotor grades can be trended for predictive maintenance.

## Collect all your Data in One Program

EMCAT provides fields to record test data from other PdM technologies including vibration, IR, Current Signature, P.I., Ultrasound, and High Potential test results. Evaluate all aspects of machine health from within a single program!

## Extensive and Flexible Reporting

Standard reports include:

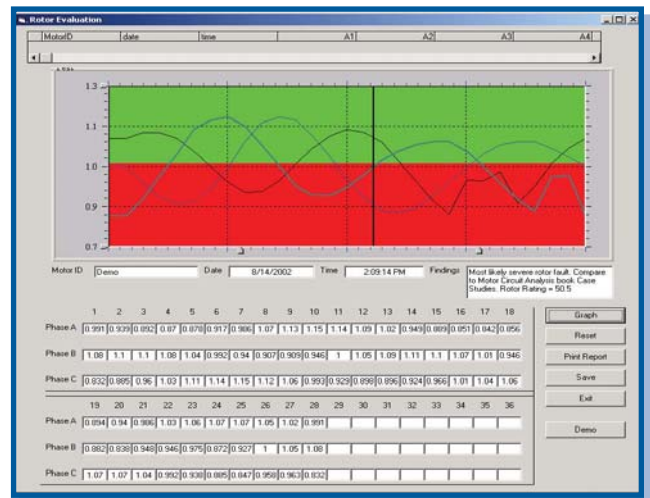
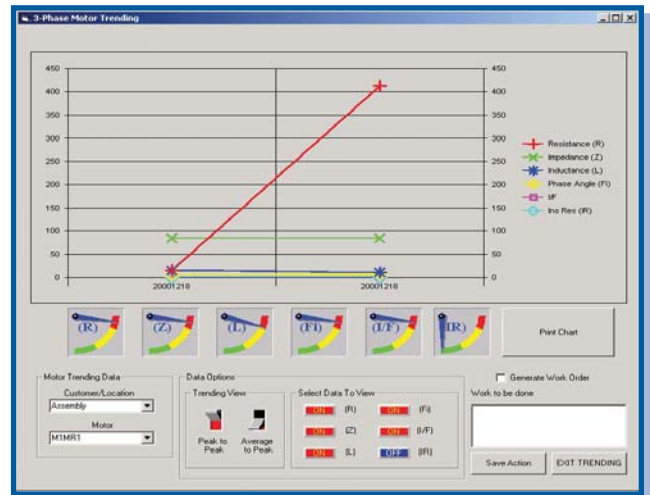
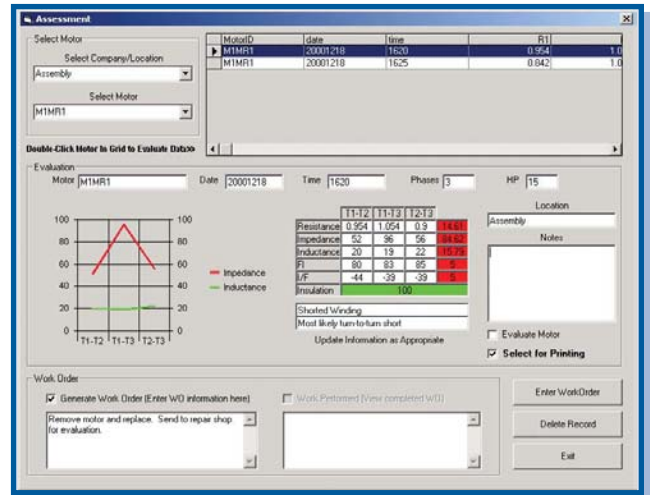
- Detailed test reports and trend reports for individual devices
- List of equipment to be reviewed (unbalance indicated on previous test)
- Past-Due maintenance items

## Interface with Your CMMS

You may already have a CMMS that handles scheduling and work orders. We've incorporated a module within EMCAT that allows data to be shared. We'll customize the program to integrate with your in-house system. Contact the factory for details.

## System Requirements

- Pentium computer or equivalent running Windows™ 98, NT, or 2000.
- 32 MB RAM, minimum 30 MB available hard disk space.
- 1024 X 769 minimum screen resolution.
- Available serial port for uploading and downloading.
- Available parallel port for security device.



Windows is a trademark of Microsoft Corporation

Learn more about how EMCAT can help you improve your plant performance.  
Call us at 800 442-2562 to request your free demonstration disk.

### ALL-TEST Pro – A Division of BJM Corp

123 Spencer Plains Rd.  
Old Saybrook, CT 06475  
Tel 800 442-2562  
860 399-5937  
Fax 860 399-7784  
Web www.alltestpro.com

### Represented by: